

# SAF-T-FENCE® PARTITIONING SYSTEM

LAYOUT SERVICE  
AND QUOTATION  
WORKSHEET

**For a custom quote print out, complete pages 1 and 2. FAX both pages to 708-325-0450**

Name \_\_\_\_\_ City \_\_\_\_\_ State \_\_\_\_\_ Zip \_\_\_\_\_  
 Company \_\_\_\_\_ Phone \_\_\_\_\_ Ext \_\_\_\_\_  
 Address \_\_\_\_\_ Fax \_\_\_\_\_  
 \_\_\_\_\_ Email \_\_\_\_\_



**IN STOCK** | QuickShip

**CHECK ALL THAT APPLY**

**Height:**

- 7'  8'  10'

**Panels:**

**Standard:**

- Welded wire mesh with 1-1/4" w X 2-1/2" h grid openings

**Other Panel Options:**

- Clear polycarbonate  Smoke polycarbonate

**Door Style:**

- Single hinged:  34" wide  46" wide
- Pair hinged:  70" wide  94" wide
- Single slide:  34" wide  46" wide  58" wide  70" wide  94" wide
- Pair slide:  70" wide  94" wide
- Clear access slide:  70" wide
- Clear access pair slide:  94" wide  142" wide

**Door Hardware:**

**Standard:**

- Pull handle with built-in cylinder lock and thumbturn
- Cylinder lock add-ons:**  Lever handle  Pushbar  Paddle
- Key Pad  Card Reader  Magnetic Lock  Electric Strike

**Option:**

- Padlock hasp

**Accessories:**

- Angle panel kit  Hydraulic closure for 7' or 8' hinge door

**Finish:**

**Standard:**

- Black powder coating

**Options:**

- Custom powder coating color, specify:

\_\_\_\_\_  
 \_\_\_\_\_

**Do you need installation?**  Yes  No

**Do you need the name of a local dealer?**  Yes  No

**Freight quote?:**

Yes  No Ship to zip code: \_\_\_\_\_

**Additional Information:**

\_\_\_\_\_  
 \_\_\_\_\_  
 \_\_\_\_\_  
 \_\_\_\_\_  
 \_\_\_\_\_  
 \_\_\_\_\_  
 \_\_\_\_\_  
 \_\_\_\_\_  
 \_\_\_\_\_  
 \_\_\_\_\_



5858 West 73rd Street  
 Bedford Park, IL 60638  
 e-mail: sales@foldingguard.com  
 www.foldingguard.com

**FOR ASSISTANCE CALL: 1-800-622-2214**  
 8AM-5:00 PM CST

# SAF-T-FENCE® PARTITIONING SYSTEM

LAYOUT SERVICE  
AND QUOTATION  
WORKSHEET

Name \_\_\_\_\_ Company \_\_\_\_\_

**Fax your floor plan:**

Sketch plan below and indicate overall dimensions and location of door. Note the construction of floor as either concrete or wood. If partition butts to an existing wall, note construction of each wall as masonry, wood or drywall/gypsum board/plaster.

**Email your floor plan:**

Print out, complete and fax quotation worksheet along with e-mailed floor plan.

E-mail layout to: [sales@foldingguard.com](mailto:sales@foldingguard.com). Format sent:  AutoCad 2000  SolidWorks  PDF



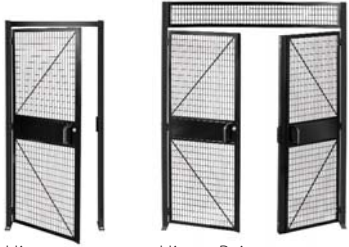
5858 West 73rd Street  
Bedford Park, IL 60638  
e-mail: [sales@foldingguard.com](mailto:sales@foldingguard.com)  
[www.foldingguard.com](http://www.foldingguard.com)

**FOR ASSISTANCE CALL: 1-800-622-2214**  
8AM-5:00 PM CST

# SAF-T-FENCE® PARTITIONING SYSTEM

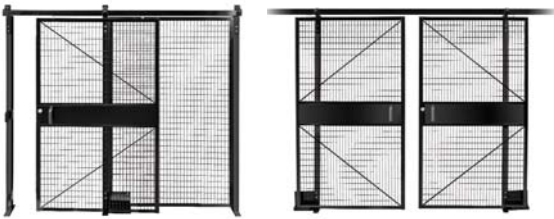
LAYOUT SERVICE  
AND QUOTATION  
WORKSHEET

## Door Styles



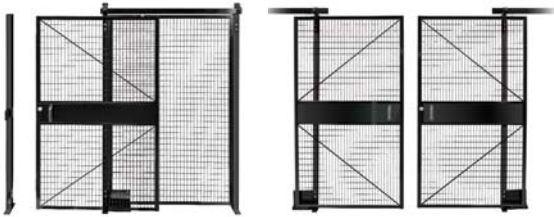
Hinge

Hinge Pair  
(transom included with 8-ft. system)



Slide  
(fixed panel sold separate)

Slide Pair



Clear Access Slide  
(fixed panel sold separate)

Clear Access Slide Pair

### Door Hardware Configurations

	Cylinder Lock	Lever Handle	Pushbar	Paddle	Keypad	Magnetic Lock	Padlock Hasp	Electric Strike	Card Reader
Hinge	■	■	■	■	■	■	■	■	■
Hinge Pair	■	■	■	■	■	■	■	■	■
Slide	■				■	■	■	■	■
Slide Pair	■					■			
Clear Access Slide	■				■	■	■	■	■
Clear Access Slide Pair	■					■			

**IN STOCK** | **QuickShip**

## Door Hardware

### Standard Front



Cylinder Lock and  
Pull Handle

### Standard Back



Thumbturn

Patent Pending

### Options



Lever Handle



Pushbar



Paddle



Padlock Hasp  
(padlock not included)



Electric Strike



Card Reader



Keypad



Slide Door Magnetic Lock

## Accessories



Hinge Door  
Hydraulic Closure



Angle Panel Kit  
(post and panels sold separate)



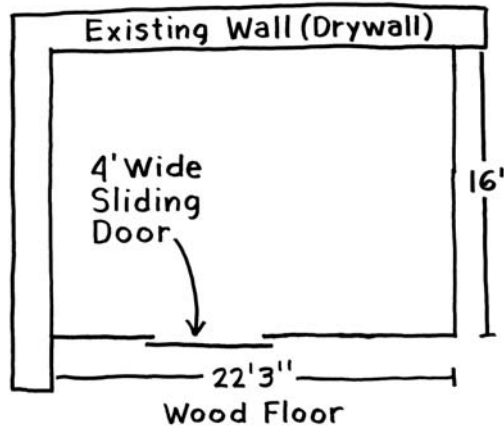
5858 West 73rd Street  
Bedford Park, IL 60638  
e-mail: sales@foldingguard.com  
www.foldingguard.com

**FOR ASSISTANCE CALL: 1-800-622-2214**

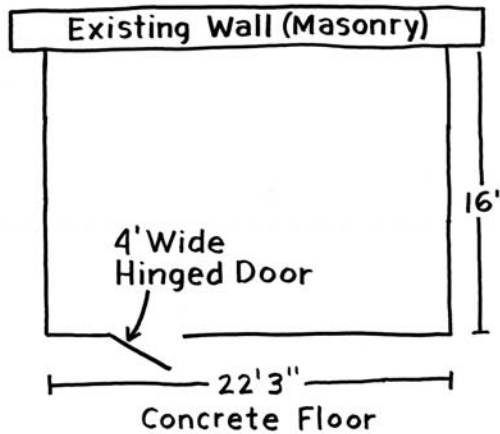
**8AM-5:00 PM CST**

## Sample Floor Plan Sketches

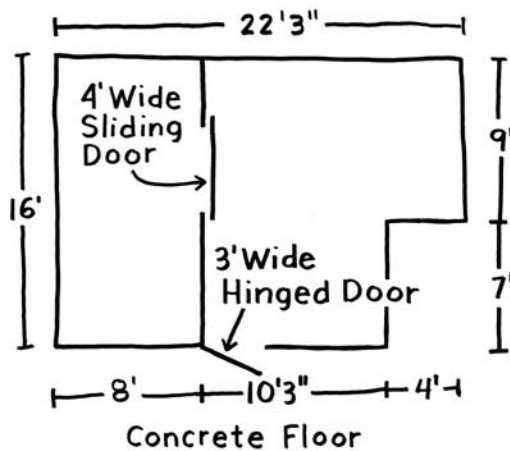
2-sided enclosure



3-sided enclosure



4-sided enclosure



FOR ASSISTANCE CALL:  
1-800-622-2214  
8AM-5:00 PM CST



5858 West 73rd Street, Bedford Park, IL 60638  
e-mail: sales@foldingguard.com www.foldingguard.com