



(800) 622-2214 (TEL)

(708) 325-0400 (TEL)

(708) 325-0450 (FAX)

5858 W. 73RD STREET
BEDFORD PARK, IL. 60638

CELLGARDTM II
INSTALLATION
INSTRUCTIONS

5858 W. 73rd Street (800) 622-2214 (Tel.)
Bedford Park, IL. 60638 (708) 325-0400 (Tel.)
(708) 325-0450 (Fax)

The following installation instructions should be used as a guide for installing Folding Guard CELLGARD II Partitions. Good common sense and appropriate safety precautions must be used during installations. The product may be unstable during installation; temporary bracing should be implemented until all hardware is tightened and the product is properly anchored to the floor. Permanent field bracing (Not supplied) may be installed at installer's/owner's discretion. Installation problems arising from job site conditions should be referred to a professional installer. Refer product assembly questions to Folding Guard®.

Tools Required:

- ½" Masonry Bit
- ½" Wrench
- Hammer
- Electric Drill (Var. Speed)
- Floor Anchors (Not Supplied).
Recommended ½"-13 X 3¾"
Anchors.

Tools Recommended:

- Drill Bits (Various)
- Flat Screw Driver
- Tape Measure
- Ladders
- Level
- Chalk Line
- Rubber Mallet

Prior to Installation:

- Make sure that you have all the parts required for the assembly. (Doors, panels, etc...)
- Make sure that the installation area is clear of all obstructions.
- Read through all the instructions pertinent to your installation.

Installer Tips:

- Installation is best completed with the help of one additional person.
- If a drawing was not provided, make a sketch of your planned layout.
- Denote sequence and position of each panel, door and post.
- If at all possible lay out the parts where they are to be installed.
- If your plan calls for, begin installation at a wall, corner or at the end of a post.
- Panels are to be installed horizontally between posts, parallel with the ground.
- Installer should eliminate any bolts or hardware protruding into aisle ways or around door openings.

Note:

Self-Tapping Screw Installation Recommendations:

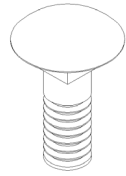
When installing self-tapping screws use a standard variable speed screw gun equipped with an adjustable clutch or depth locating nosepiece. Do not to over tighten or strip, set the drill accordingly. DO NOT USE IMPACT TYPE GUN WHEN INSTALLING SELF-TAPPING SCREWS. Securely clamp component parts in place before attaching with self-tapping screws.

5858 W. 73rd Street
Bedford Park, IL. 60638

(800) 622-2214 (Tel.)
(708) 325-0400 (Tel.)
(708) 325-0450 (Fax)

Hardware:

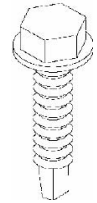
1/4"-20 X 1"
Carriage Bolt (A1)



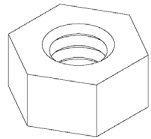
1/4"-14 X 1 1/2" TEK Self
Tapping Screw (A2)



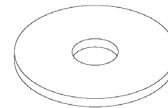
1/4"-14 X 1" TEK Self
Tapping Screw (A3)



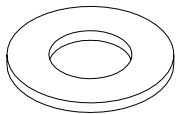
1/4"-20 Hex Nuts
(A4)



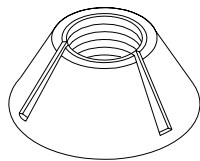
1/4"X1" Washer (A5)



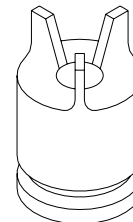
3/16"X 3/8" Washer (A6)



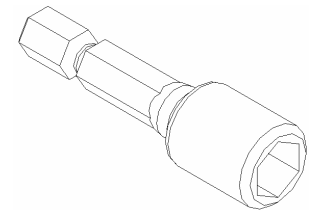
3/8"-16 Tri- Groove
Nut (A7)



3/8" Socket Key
(Supplied by
Folding Guard)
(A8)

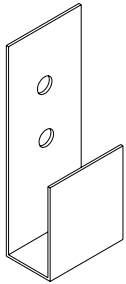


5/16" Socket
(Supplied by
Folding Guard)
(A9)

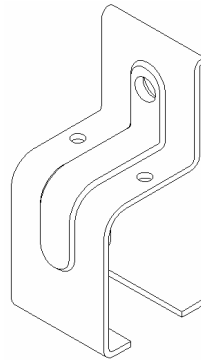


Other Items included:

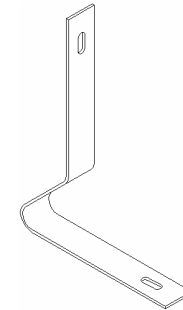
Standard Slide Door
Bottom Guide (B1)



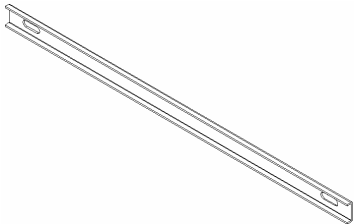
Slide Door Bracket (B2)



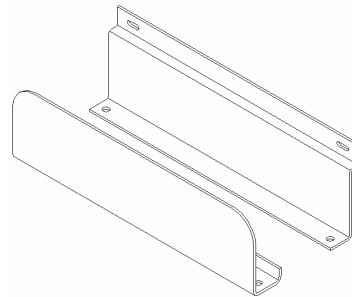
Slide Door Guide (B3)



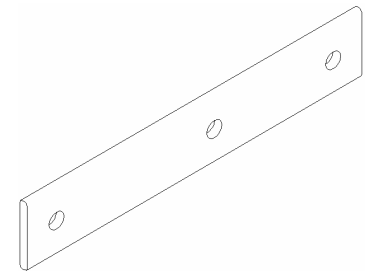
Bottom Guide Attachment
(Optional) (B4) Use with
B5



Slide Door Bottom Guide
(Optional) (B5)

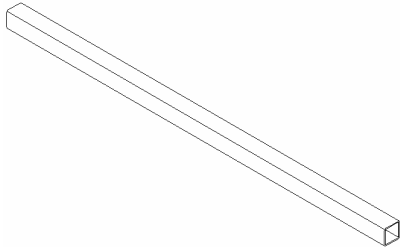


Slide Door Bracket Mounting
Strip (Optional) (B6)

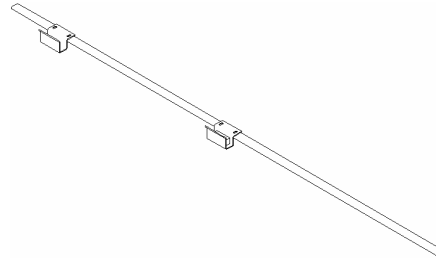


Other Items included:

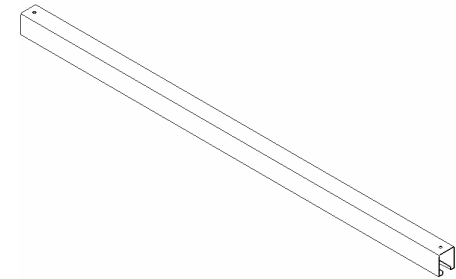
Hinge Door
Header Bar 2"X2"
(C1)



Slide Door
Lock Receiver Bar
(C2)



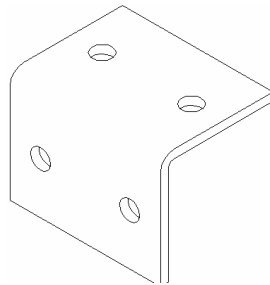
Slide Door Track
(C3)



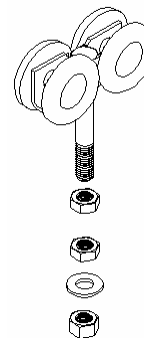
Hinge Door
Receiver Door Bar
(C4)



Hinge Door Header
Bracket (C5)



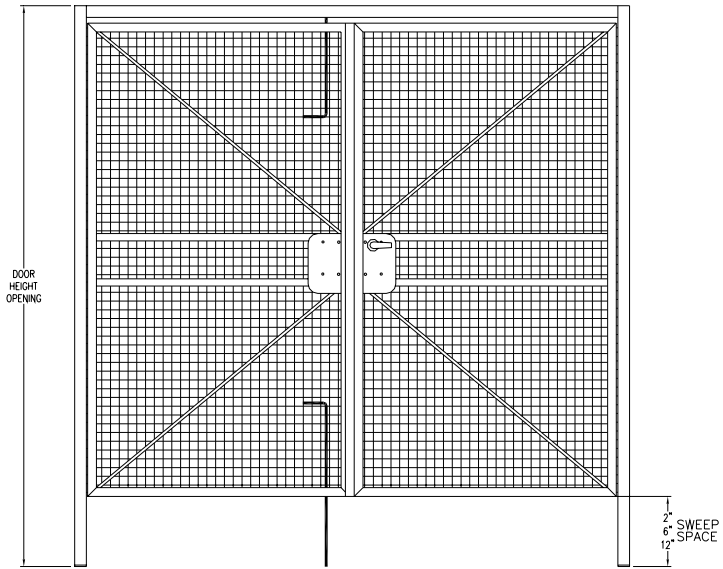
Slide Door Trolley
Assembly (C6)



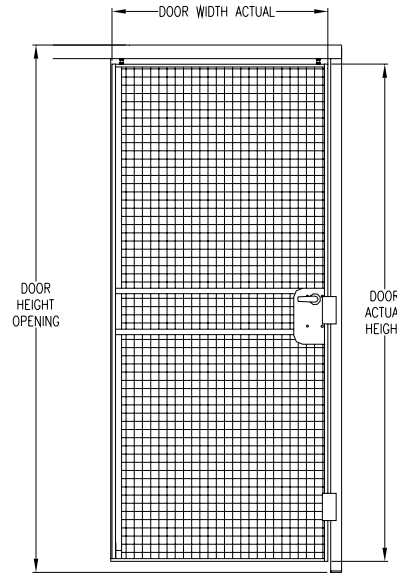
12" Extension Post
for Slide Door
Bracket (C7)
Optional



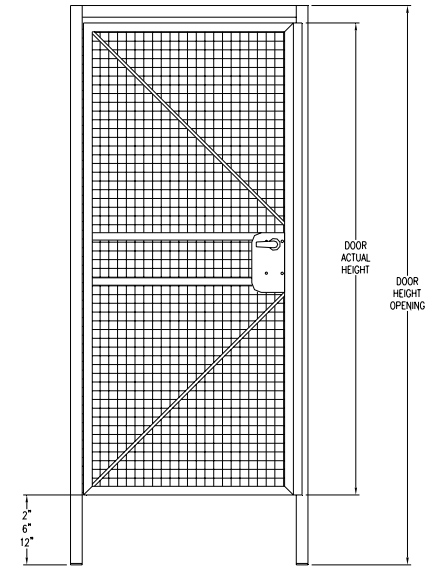
Doors and Panels:



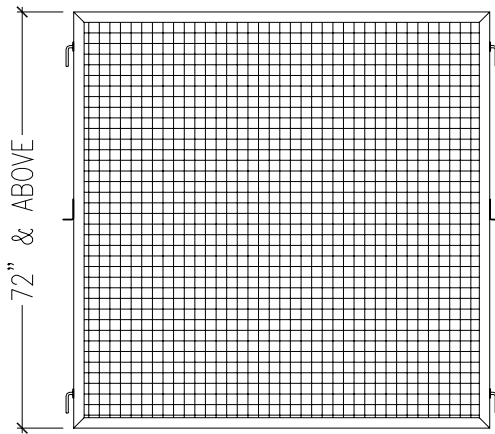
Standard Hinge Pair
With Cane Bolts



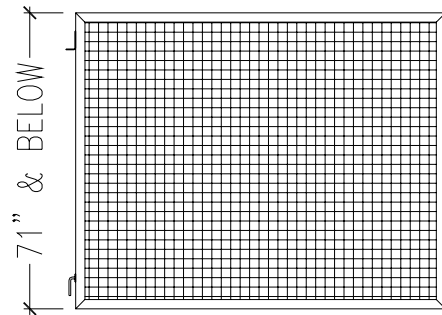
Standard Slide Door
With Lock Lever



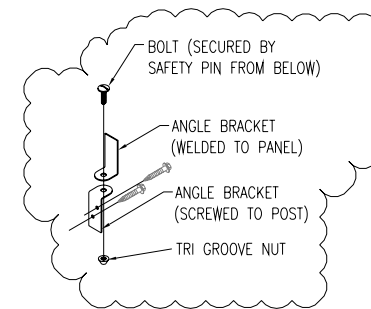
Standard Hinge Door
With Lock Lever



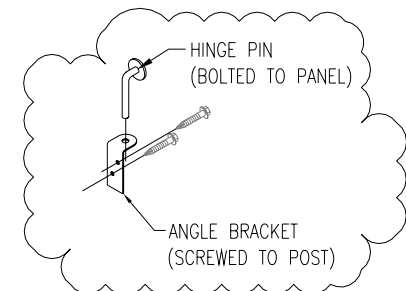
Standard Oversized Panel with
(3) Angle Brackets per side



Standard Panel with (2)
Angle Brackets per side



Standard Mounting
Angle Bracket Detail



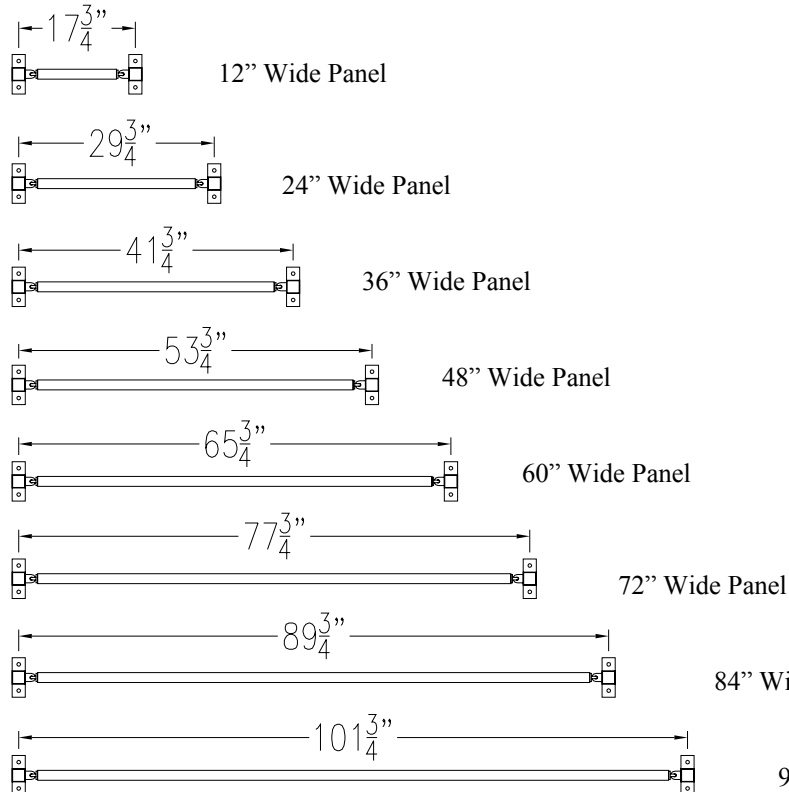
5858 W. 73rd Street (800) 622-2214 (Tel.)
Bedford Park, IL. 60638 (708) 325-0400 (Tel.)
(708) 325-0450 (Fax)

Standard panel layout, post location & hanger pin positions.

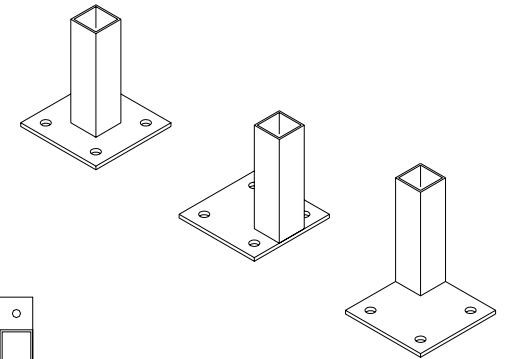
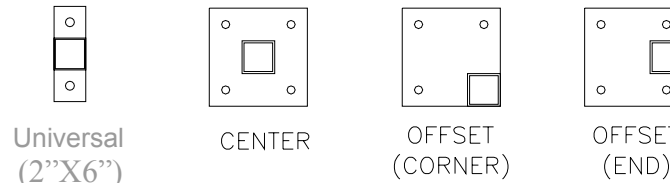
- Standard panel 1½” x 1½” grid opening, framed in steel angle. Panels are actual sizes. Example: QG45 is 48”W x 60”H not including brackets and pins.
- When laying out floor plan & choosing panel width sizes each panel will increase by 5¾”. (With the addition of two post center to center)
- 2” x 2” Post placements are available in three different locations on a 6” x 6” foot plate. Example: an “offset end post” would be used for starting at a wall, offset corner post would be used at a corner and a center line post would be used for connecting two panels together.
- Bracket pin location may be located on one side of post to all four sides of post. Post location and bracket pin location maybe mixed and matched to meet you needs.

Centerline to centerline dimensions for standard panels with two posts.

Note: Top view of posts with tube at center of footplate.

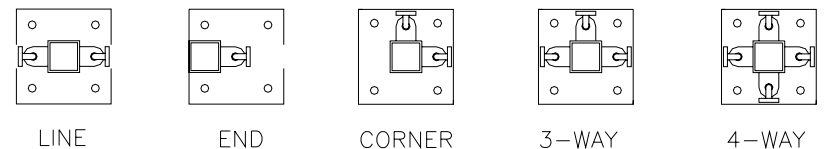


AVAILABLE POST LOCATIONS



Note: Overall dimensions will be affected when using offset post locations.

AVAILABLE BRACKET/PIN LOCATIONS



5858 W. 73rd Street (800) 622-2214 (Tel.)
Bedford Park, IL. 60638 (708) 325-0400 (Tel.)
(708) 325-0450 (Fax)

Step 1: Setting up for installation.

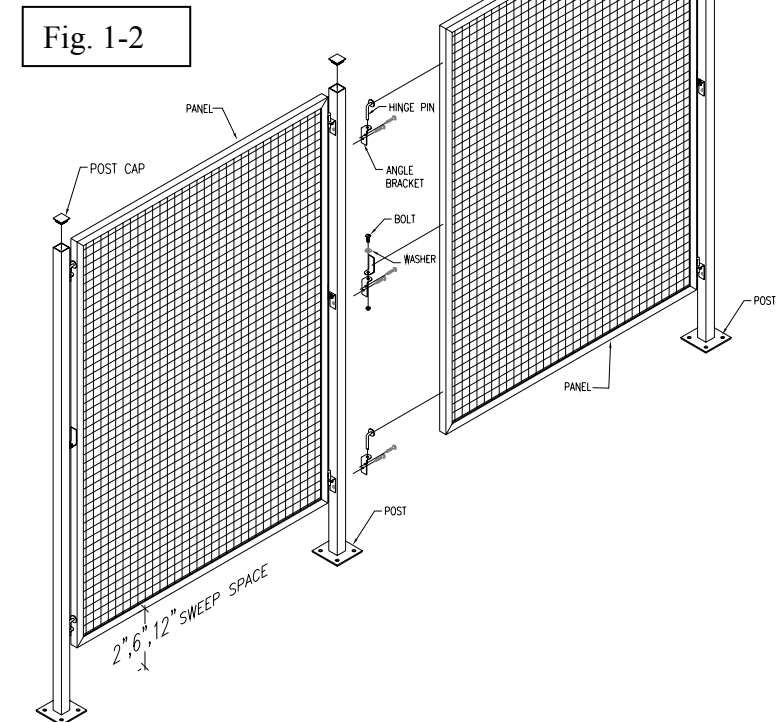
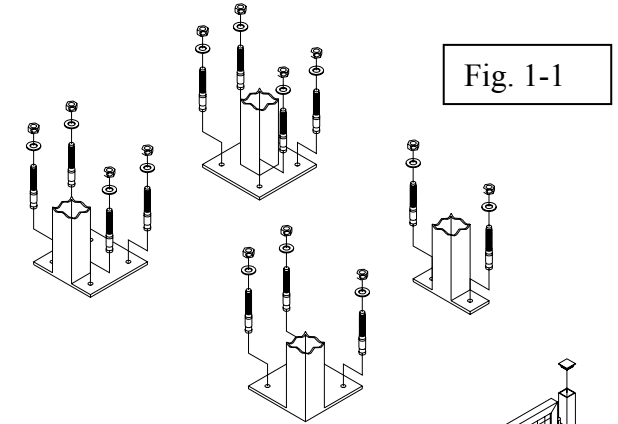
- Plan the layout of the CELLGARD II Perimeter.
- Lay down a chalk or tape line where the partitions are to be installed.
- Mark every post location.
- Mark every panel/door location.
- Starting at one end, work in one direction.

Step 2: Adding a post. Refer to figure 1-1 for reference.

- Anchor (1) post to the floor then anchor (1) adjacent post to floor following the supplied centerline to centerline dimension. (verify that the dimension of adjacent post is correct using the actual panel before drilling anchor holes)
- Secure the post to the floor using floor anchors (Not supplied) recommended: 1/2"-13 X 3 3/4" Anchor.
- You may use holes in the posts as a drill guide. Refer to figure 1-1 for reference.
- Post should be plumb and square, shim stock maybe required.

Step 3: Adding a panel. Refer to figure 1-2 for reference.

- Place the panel so that the flat of the angle is facing towards the outside of the cell.
- Align hinge pin of panel with the angle bracket of the post & drop down.
- The angle bracket of the panel should rest on top of the angle bracket of the post.
- Using the provided bolt (A1), nut (A7) with socket key (A8) secure the panel to post. Refer to page 6 "Standard Mounting Angle Bracket Detail".



Step 4: Installing a Hinge Door (Optional)

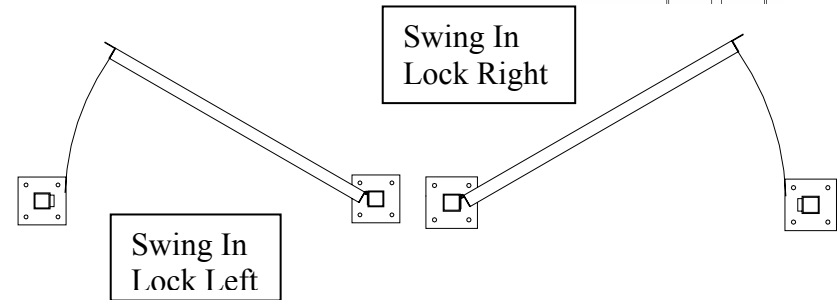
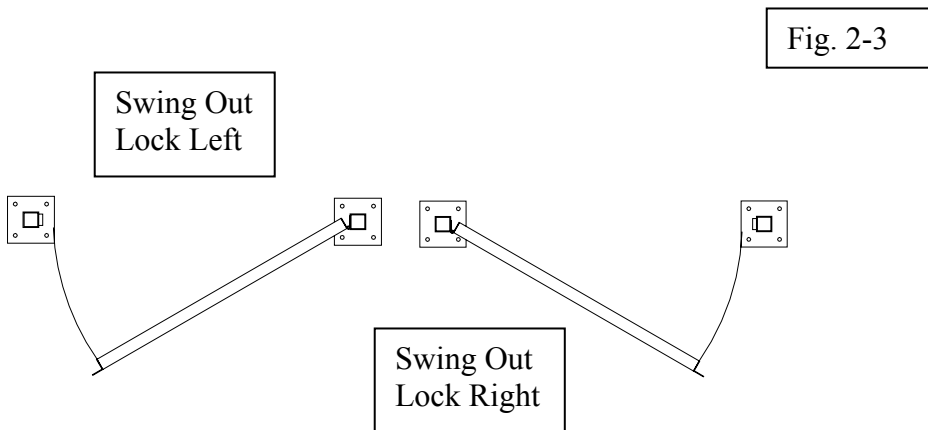
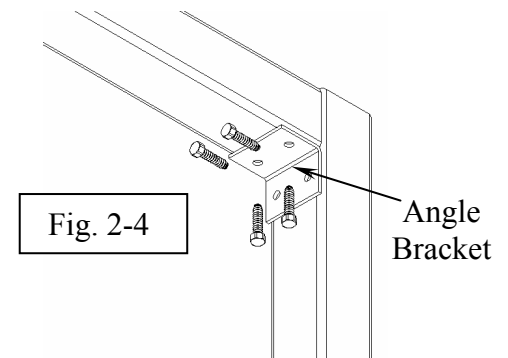
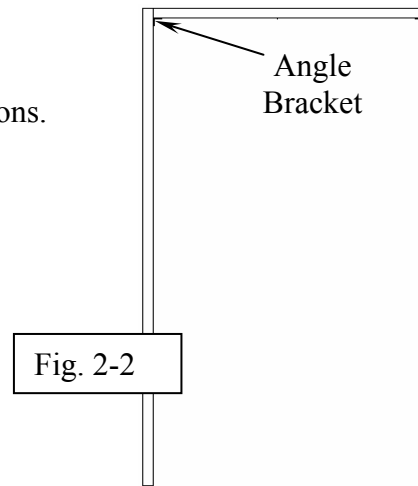
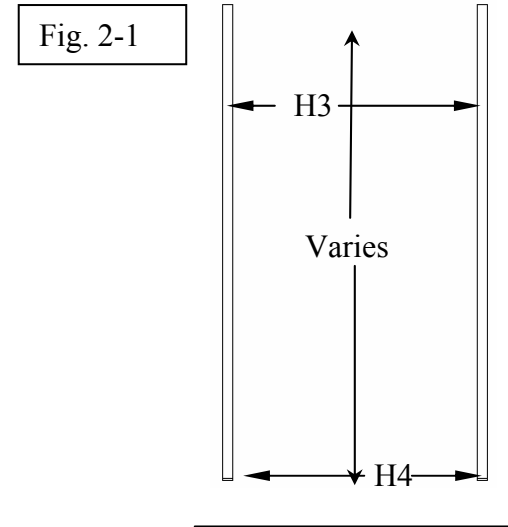
- Prior to beginning installation make sure that your plan includes a door and that it is a Hinge door.
- Make sure that the door is manufactured per your requirements and matches the overall plan layout in terms of hinge and lock.
- All parts required for a Hinge door assembly are included with your door.
- Your side posts should already be installed and secure in their location.
 - The spacing for the Hinge doors are as follows:
 - H3 – 36 3/4" X height varies (36 3/4" header width).
 - H4 – 48 3/4" X height varies (48 3/4" header width).
- Refer to Figure (2-1) for reference. Refer to Figure (2-4) for overall instructions.

Step 4A: Installing a Header Bar (C1)

- Place the Header bar (C1) flush with the top of the Posts.
 - Refer to Figure (2-2) for reference.
 - Attach it to the vertical post with the Hinge Door Header Bracket (C5)
 - Secure with the 4 Self Tapping Screws (2-4) as shown.
 - Refer to Figure (2-2) for location of angle bracket.

Step 4B: Determining the Door Hinge Direction.

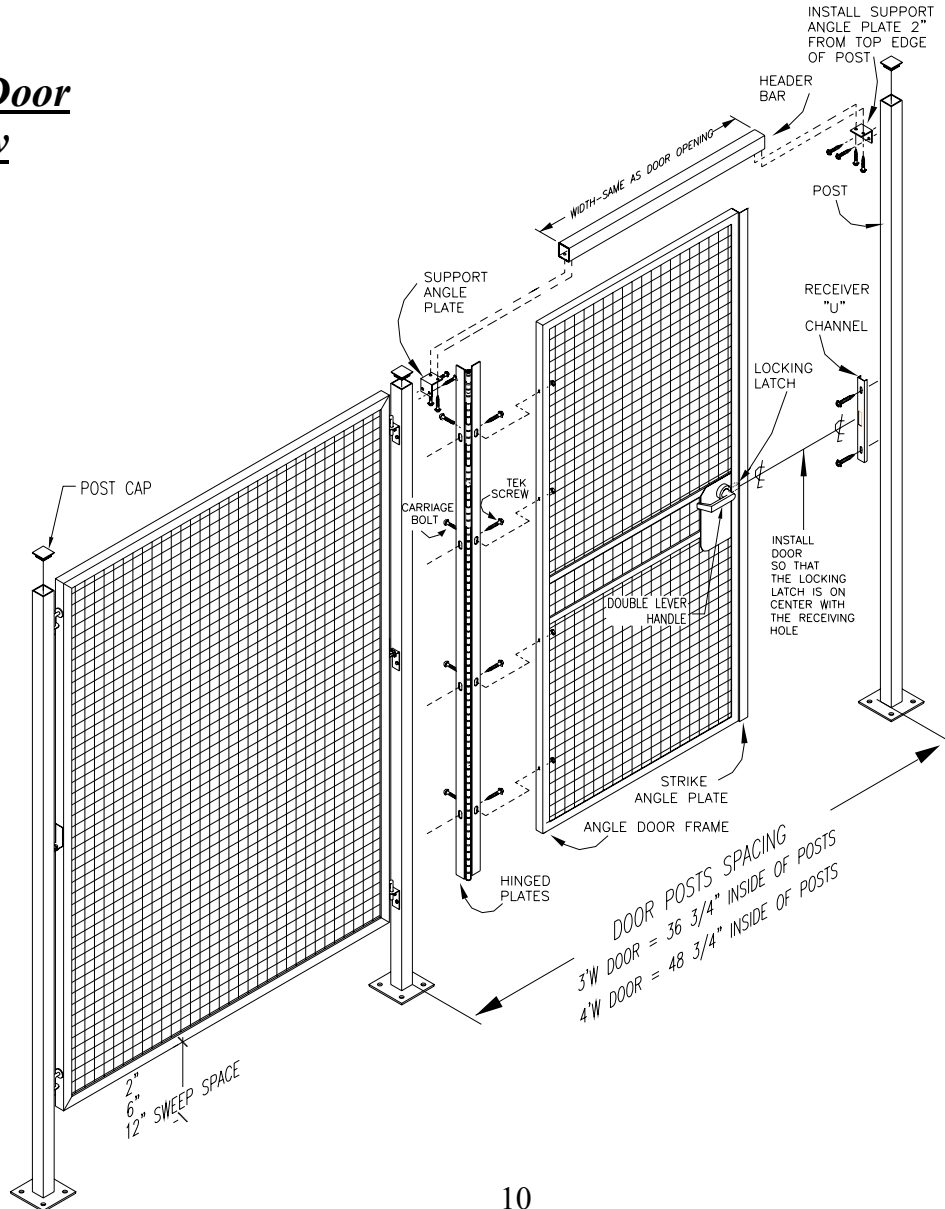
- The included Hinge door can be attached 1 of 4 ways. See Figure (2-3)



5858 W. 73rd Street
Bedford Park, IL. 60638

(800) 622-2214 (Tel.)
(708) 325-0400 (Tel.)
(708) 325-0450 (Fax)

**Complete Hinge Door
Assembly View**



5858 W. 73rd Street
Bedford Park, IL. 60638

(800) 622-2214 (Tel.)
(708) 325-0400 (Tel.)
(708) 325-0450 (Fax)

Slide Door Bracket Assembly:

Step 5: Slide Door Bracket (B4).

- If standard post height is 96" & you wish extend the slide door track you can use a 12" Post Extension (C7).
- If Extension Post is not available you can use the slide door Bracket Mounting Strip (B6).
- If Post height is MORE than 96" & cannot exceed 108" in height proceed to (Step 5B).
- If your Vertical Post height is taller than 96" DO NOT attach the Slide Door Bracket (B2). Instead measure 96" from the ground to the bottom of the Slide Door Bracket (B2) and using a TEK screw (A3) and (A5) washer attach directly to post.

For reference use Figure (3-4).

Optional: Slide Door Bracket Assembly.

- Assemble Slide Door Bracket (B2) and Slide Bracket Mounting Strip (B6) with an carriage bolt(A1), washer(A6) and nut(A4) as shown in Figure (3-1).
 - Please note that Mounting Strip (B6) has uneven placed holes make sure to attach the Bracket (B2) to the farthest hole.

Step 5B: Slide Door Pre-Assembly.

- Insert each of the Trolley assemblies into the existing holes on the top of the door. Fig. (4-3) & (4-4).

Step 5C: Slide Channel & Attachment.

- Take the Slide Door Bracket assembly, attached to the Slide Door Bracket Mounting strip and mount to the top of the post and attach through the bottom two holes via a TEK screw and a washer.
- Insert the trolleys into the Slide Door Track (C3). Slide door all the way through. Make sure that the door moves freely with in the Slide Door Track
- Insert the Slide Door Track inside the Slide Door Bracket as shown in Figure (3-2).
- Insert Screw Stop.
- Tighten bracket screws to door track.

Fig. 3-1

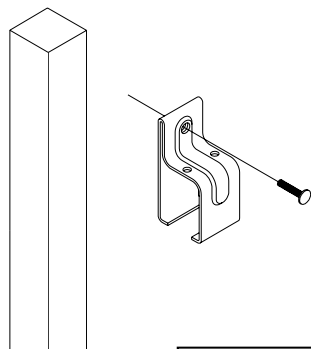
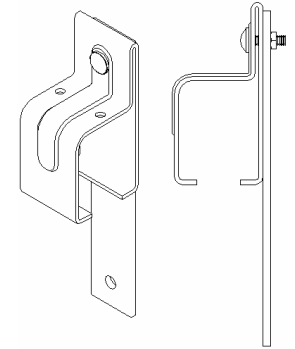


Fig. 3-4

Fig. 3-3

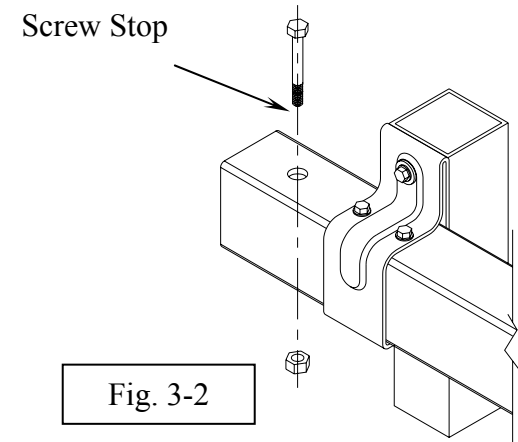
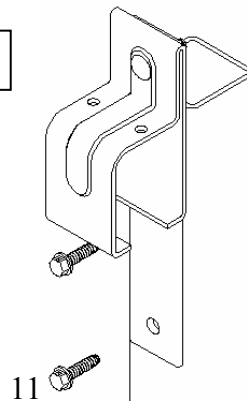


Fig. 3-2

5858 W. 73rd Street
Bedford Park, IL. 60638

(800) 622-2214 (Tel.)
(708) 325-0400 (Tel.)
(708) 325-0450 (Fax)

Fig. 4-1
Step #1

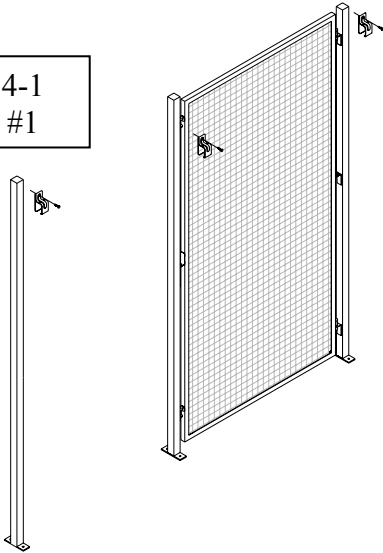


Fig. 4-2
Step #2

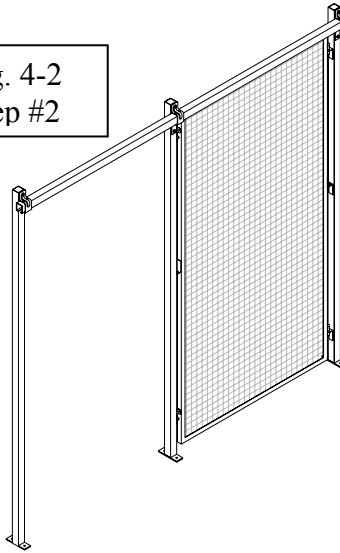


Fig. 4-3
Step #3

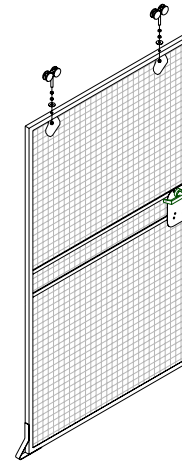


Fig. 4-4
Step #4

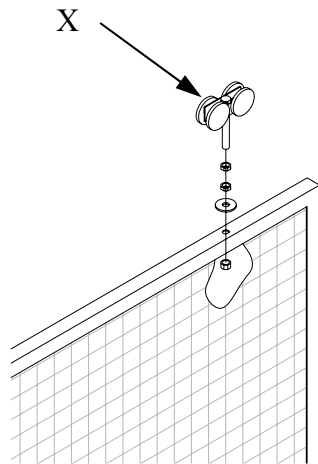
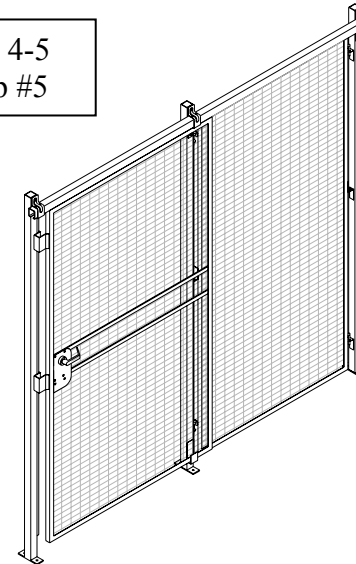


Fig. 4-5
Step #5



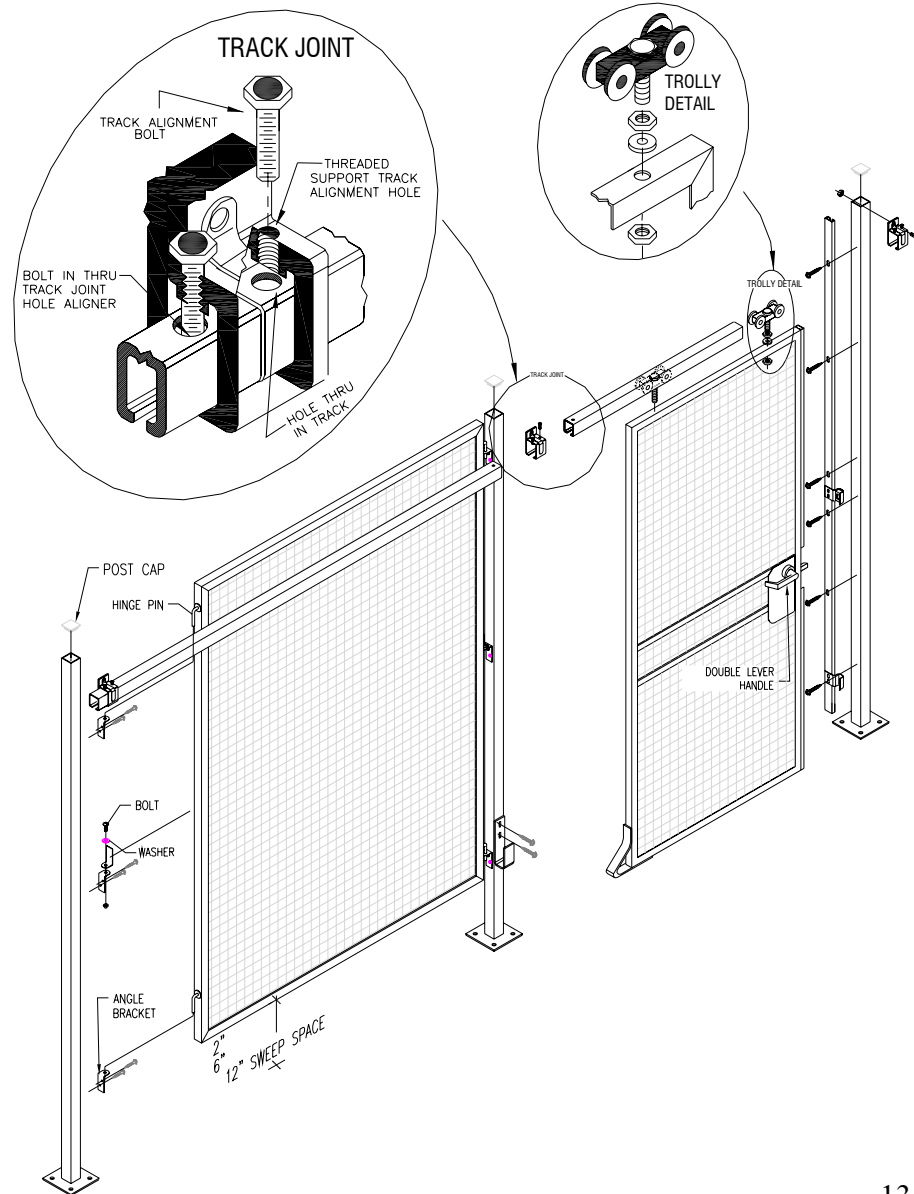


Fig. 5-1

**Slide Door Assembly.
Frame Attachment.**

- Slide Door Figure (4-3) is shipped partly set up.
 - Door frame sizes are exactly as noted on shipping list (i.e. 3'-0" = Outside frame to outside of frame is 36"). See under Doors & Panels for reference.)
- If attaching Slide Door Frame Figure (4-5) to Post please consult your Layout Drawing for Post orientation.

Note:

- If attaching Slide Door to a Wall:
 - Make sure that the Sliding Door is going to be sliding AWAY from the wall.
 - Place the Slide Door Post flush with the wall.
 - All Slide Doors are lock right from the outside looking in, unless otherwise specified.
- Standard slide doors include (2) trolleys for 6' W thru 9' W doors.
- Slide doors wider than 9' would include (4) trolleys.
- In the direction in which the slide door opens the side panel width must be greater then or equal to the door width.

THANK YOU FOR USING



CELLGARDTM II PRODUCTS



www.foldingguard.com

CELLGARDTM II

GENERAL INFORMATION

5858 W. 73rd Street (800) 622-2214 (Tel.)
Bedford Park, IL. 60638 (708) 325-0400 (Tel.)
(708) 325-0450 (Fax)

In our effort to provide you with a better experience using Folding Guard® current and future products we would like to hear from you. Please answer the following questions bellow. Fax the completed survey to our Main Office at: (708) 325-0450, or you can e-mail it to us at Sales@FoldingGuard.com. We look forward to hearing from you and will address your comments and suggestions in a timely manner.

Order Number:

Installation Date:

How would you rate the quality of these instructions, please check all that apply:

Other: _____

- Confusing
- Too much information
- Not enough information
- Easy to Understand
- More Visual Material
- More Text Material

Were the instructions clear and concise, if no please write down what wasn't: _____

Did you run into any problems during the installation of the product, if yes please describe them: _____

Are you satisfied with our product? If not please let us know how we can improve it: _____

Comments: _____